

Woven Bottle Lantern

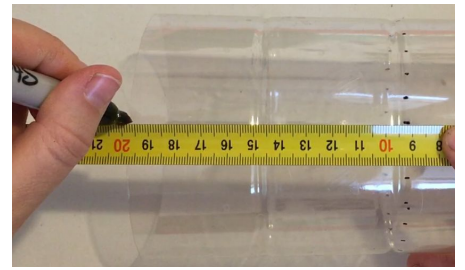
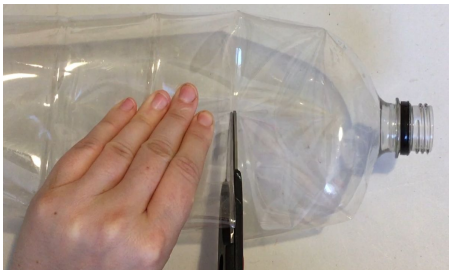


What you will need:

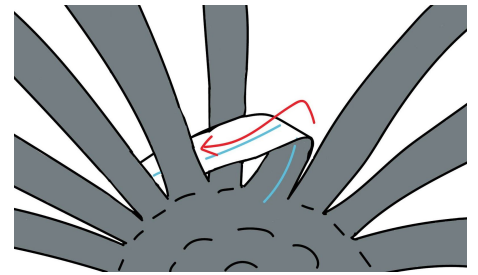
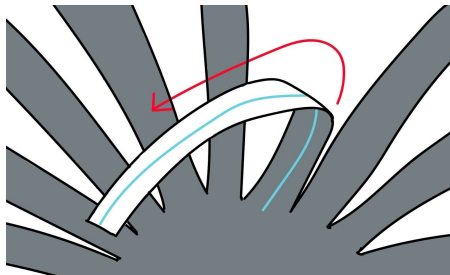
- A clean empty plastic bottle
- Marker pen
- Ruler or tape measure
- Scissors
- Ribbon or thread for handle (optional)
- A battery operated tealight or small candle



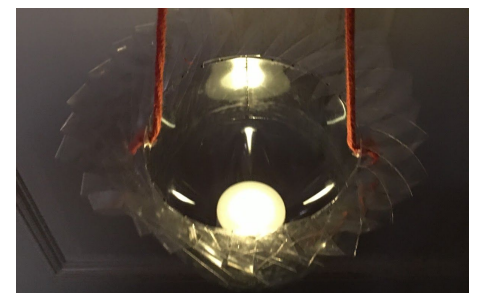
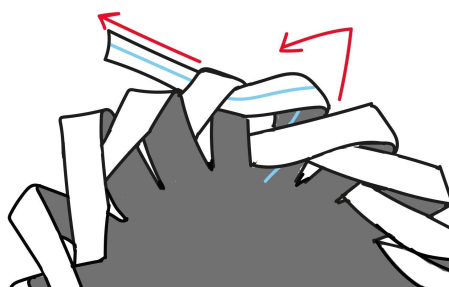
1. To cut the top from the bottle: Use the top rib in the bottle as a guide and squash the bottle at this point
2. Use the scissors to cut along the line where you have squashed the bottle and then trim around the top edge



3. Use the marker with the ruler or tape measure to measure 1 cm marks around the bottle along the bottom rib
4. Use the ruler to mark a spot at the top edge of the bottle that matches the spots around the bottom rib
5. Once you have all your spots marked along the top edge matching the spots marked on the bottom rib, cut straight lines from the top edge down to the spots on the bottom rib
6. You will now have many long strips of plastic. Fold these back so the bottle looks like a sunburst or flower
7. To begin weaving: take one strip and fold it inwards at an angle as in the photo
8. Take the strip and pass it over the strip next to it and then under the following strip. The strip you are working on should now be sticking out of the bottom
9. Take 2nd strip (the one you just passed the 1st strip over the top of) and repeat steps 7-9 until the last strip



10. When you reach the final strip take the end and pass it through the 1st strip through where the first strip folds



11. Neaten up your lantern by pinching all folds and snipping off the ends of the strips to remove the pen marks
12. Add an optional handle by making two holes under the weave and tying some ribbon
13. Add your battery powered tea light and admire your handy work!